

2024

TEAM Lowcountry Early Childhood Conference



16th Annual

Conference



April 5 - 6, 2024 | 8AM - 3:40PM
The Baptist Church of Beaufort
601 Charles St.
Beaufort, SC 29902

NOTES



A CHILD'S LIFE IS LIKE A PIECE OF PAPER ON
WHICH EVERY PERSON LEAVES A MARK.

ROBERT A. HEINLEIN

TABLE OF CONTENTS

WELCOME	4
GENERAL CONFERENCE INFORMATION	5-6
ROOM LOCATIONS	7
CONFERENCE SCHEDULE - FRIDAY	8-9
CONFERENCE SCHEDULE - SATURDAY	10-11
KEYNOTE SPEAKERS	12
SESSION DESCRIPTIONS	13-16
PRESENTER ACKNOWLEDGEMENTS	17
SPECIAL ACKNOWLEDGEMENTS	18
TEAM LOWCOUNTRY COMMITTEE	19
COUNTY PARTNERSHIPS	20
OUR SPONSORS	21
CERTIFICATE OF ATTENDANCE	23
SURVEY	26

WELCOME!

WELCOME, EARLY CHILDHOOD PROFESSIONALS TO

Teachers **E**ducators **A**dvocates **M**entors
Lowcountry's Sixteenth Annual Conference!

T.E.A.M. LOWCOUNTRY WELCOMES YOU TO BEAUFORT, SOUTH CAROLINA.
WE ARE EXCITED TO HAVE YOU JOIN US!

APRIL 5 - 6, 2024
BAPTIST CHURCH OF BEAUFORT
601 CHARLES ST. | BEAUFORT, SC 29902

Every year we gather to support our mission of promoting high-quality training to ensure everyone working in early education has the opportunity to learn and network with other like professionals. Together we can work to advance a profession that is vital to the future of our communities.

T.E.A.M. Lowcountry Conference is designed to bring us together to learn, reflect, grow, and become vocal about the important work WE do every day.

Thank you for your commitment and dedication to early childhood education!

GENERAL CONFERENCE INFORMATION

Please be sure you are given your name tag, sheet of name labels, and a conference brochure outlining session locations and other relevant information.

Name Tags

Your name tag is your admittance into the workshop sessions. You will not be allowed to enter a room without your name tag. Door prize tickets are located behind your name tag. If you do not have a ticket, please inform a TEAM Conference Committee Staff.

Workshop & Room Assignment

Please refer to this Program to find the sessions and room numbers where your workshop will be held. Please note that sessions are first come, first serve. If there is a "session closed" sign, please choose another session to attend.

Location of Workshops

Signs are posted outside each classroom door indicating title of sessions, the presenter, and the time each session will be held. If you have problems locating the correct room, please ask a TEAM Staff Member for assistance. TEAM staff will all be wearing blue or green polo shirts for easy identification.

Questions

If you have any questions, please feel free to stop by the Registration Area or ask a TEAM Staff or Volunteer.

Evaluation

Your feedback is very important to us. Please scan the QR code on the back of the program to complete the survey. We ask that you complete this so we can make the conference even better next year!

GENERAL CONFERENCE INFORMATION

Conference Attendance Labels & Credit

You have been given a sheet of labels with your name and SC Endeavors ID. You will need to put your label on the attendance sheet for each session you attend in order to receive credit.

If you signed up to attend CPR, then you will have a designated label for that session. If you do not have a CPR label, you should not be attending a CPR session.

Credit Hours & Training Certificate

A general certificate of attendance can be found in the back of this program. To receive credit for each session attended, you must attach your label with name and SC Endeavors ID to the room attendance sheet. Room captains will be assigned to make sure you receive the labels needed to verify your attendance.

IMPORTANT: Room captain will close the door 10 minutes after each workshop begins. You may still be allowed to go in, but YOU WILL NOT RECEIVE CREDIT.

To confirm that you have been given credit for each workshop attended, please log onto **www.scendeavors.org** and download a copy of your transcript. Allow at least 10 days after the conference before checking transcripts.

ROOM LOCATIONS

BUILDING C (DOWNSTAIRS)

Social Hall

BUILDING C (UPSTAIRS)

Children's Suite

Youth Center

BUILDING B (UPSTAIRS)

Room B-201

Room B-203

Room B-205

Room B-207

Room B-209

Room B-212

Room B-214

CONFERENCE SCHEDULE – FRIDAY, APRIL 5TH

TOPIC KEY: **CU – CURRICULUM** **GD – GROWTH & DEVELOPMENT** **HS – HEALTH & SAFETY** **PD – PROFESSIONAL DEVELOPMENT** **CG – CHILD GUIDANCE** **NU – NUTRITION** **PA – PROGRAM ADMINISTRATION** **SN – SPECIAL NEEDS**

7:45 – 8:15 AM

Conference Registration *Building C Entrance*

8:15 – 11:35 AM

First Aid/CPR (Additional \$25.00) First Response; Kerry Hardy *C-Youth Center*

8:15 – 9:15 AM

- KEYNOTE: “Wide-Eyed for the Unsung Heroes of Storytelling” (CU) Pam Barker *C-Social Hall*

9:25 – 10:25 AM

- It’s Giving Ick! (PA) Heather Griffin *B-209*
- You Can’t Be My Friend! (CG) Susan Kear *B-207*
- Appropriate Expectations & Responses to Behavior (CG) Anna Ghionis *B-201*
- The Early Years: Supporting Milestones (GD) Ella Mack *B-205*
- Five Faces of Leadership in Early Childhood Education (PA) Randy Mack *B-203*
- Mandated Reporter Training (PD) Ashleigh Newman *B-211*
- Improving Our Engagement with Families (PD) Bailey Smith *C-Children’s Suite*

10:35 – 11:35 AM

- Circle Time = Party Time (CU) Heather Griffin *B-209*
- Time Management for ECE Directors (PA) Susan Kear *B-207*
- Appropriate Expectations & Responses to Behavior (CG) Anna Ghionis *B-201*
- Learning Opportunities for Young Children in Math Concepts (CU) Ella Mack *B-205*
- Building Strong Relationships with Young Children through Effective Communication (CG) Randy Mack *B-203*
- Raising Relationships: An Infant & Early Childhood Mental Health Perspective on Preschool Expulsion (CG) Michelle Hammack & Queen-Ella Pringle *C-Social Hall*
- Mandated Reporter Training (PD) Ashleigh Newman *B-211*
- Improving Our Engagement with Families (PD) Bailey Smith *C-Children’s Suite*

11:45 AM – 12:20 PM

Lunch & Door Prizes *C-Social Hall*

CONFERENCE SCHEDULE – FRIDAY, APRIL 5TH

TOPIC KEY: **CU – CURRICULUM** **GD – GROWTH & DEVELOPMENT** **HS – HEALTH & SAFETY** **PD – PROFESSIONAL DEVELOPMENT** **CG – CHILD GUIDANCE** **NU – NUTRITION** **PA – PROGRAM ADMINISTRATION** **SN – SPECIAL NEEDS**

12:20 – 1:20 PM

- Growing Readers: Free Tools and Resources (PD) Chantal Gunn **B-201**
- Circle Time=Party Time (CU) Heather Griffin **B-209**
- The Essence of the Doula’s Presence: Creating Foundations for Holistic Development in Early Education (PD) Tameka Walker & Ifetayo White **B-211**
- Time Management for ECE Directors (PA) Susan Kear **B-207**
- Learning Opportunities for Young Children in Math Concepts (CU) Ella Mack **B-205**
- Building Strong Relationships with Young Children through Effective Communication (CG) Randy Mack **B-203**
- Bloodborne Pathogens: Safeguarding the EC Classroom (HS) Betty Ford **C-Youth Suite**
- Raising Relationships: An Infant & Early Childhood Mental Health Perspective on Preschool Expulsion (CG) Michelle Hammack & Queen-Ella Pringle **C-Social Hall**

1:30 – 2:30 PM

- Growing Readers: Free Tools and Resources (PD) Chantal Gunn **B-201**
- It’s Giving Ick! (PA) Heather Griffin **B-209**
- The Essence of the Doula’s Presence: Creating Foundations for Holistic Development in Early Education (PD) Tameka Walker & Ifetayo White **B-211**
- You Can’t Be My Friend! (CG) Susan Kear **B-207**
- The Early Years: Supporting Milestones (GD) Ella Mack **B-205**
- Five Faces of Leadership in Early Childhood Education (PA) Randy Mack **B-203**
- Bloodborne Pathogens: Safeguarding the EC Classroom (HS) Betty Ford **C-Youth Suite**

2:40 – 3:40 PM

- KEYNOTE: “Unsung Heroes: Movin’, Groovin’, and Making Music” (CU) Pam Barker **C-Social Hall**



ANYONE WHO DOES ANYTHING TO HELP A CHILD IN HIS LIFE IS A HERO TO ME.

FRED ROGERS

CONFERENCE SCHEDULE – SATURDAY, APRIL 6TH

TOPIC KEY: **CU** – CURRICULUM **GD** – GROWTH & DEVELOPMENT **HS** – HEALTH & SAFETY **PD** – PROFESSIONAL DEVELOPMENT **CG** – CHILD GUIDANCE **NU** – NUTRITION **PA** – PROGRAM ADMINISTRATION **SN** – SPECIAL NEEDS

7:45 – 8:15 AM

Conference Registration *Building C Entrance*

8:15 – 11:35 AM

First Aid/CPR (Additional \$25.00) First Response; Kerry Hardy *C-Youth Suite*

8:15 – 9:15 AM

- KEYNOTE: “Unmasking the Potential of Our Unsung Heroes: There is Power in Numbers” (PD) Lynn Singleton *C-Social Hall*

9:25 – 10:25 AM

- Growing Readers: Free Tools and Resources (PD) Chantal Gunn *B-201*
- It’s Giving Ick! (PA) Heather Griffin *B-209*
- You Can’t Be My Friend! (CG) Susan Kear *B-207*
- The Early Years: Supporting Milestones (GD) Ella Mack *B-205*
- Five Faces of Leadership in Early Childhood Education (PA) Randy Mack *B-203*
- Meal Safety (NU) Teneshia Slempe & Heather Reyes *C-Children’s Suite*

10:35 – 11:35 AM

- Growing Readers: Free Tools and Resources (PD) Chantal Gunn *B-201*
- Circle Time=Party Time (CU) Heather Griffin *B-209*
- Time Management for ECE Directors (PA) Susan Kear *B-207*
- Learning Opportunities for Young Children in Math Concepts (CU) Ella Mack *B-205*
- Building Strong Relationships with Young Children through Effective Communication (CG) Randy Mack *B-203*
- Meal Safety (NU) Teneshia Slempe & Heather Reyes *C-Children’s Suite*
- Discipline vs. Punishment: “Know the Difference” (CG) Kimberly Kennedy *C-Social Hall*

11:45 AM – 12:20 PM

Lunch & Door Prizes *C-Social Hall*

CONFERENCE SCHEDULE – SATURDAY, APRIL 6TH

TOPIC KEY: **CU – CURRICULUM** **GD – GROWTH & DEVELOPMENT** **HS – HEALTH & SAFETY** **PD – PROFESSIONAL DEVELOPMENT** **CG – CHILD GUIDANCE** **NU – NUTRITION** **PA – PROGRAM ADMINISTRATION** **SN – SPECIAL NEEDS**

12:20 – 1:20 PM

- Circle Time=Party Time (CU) Heather Griffin **B-209**
- The Essence of the Doula's Presence: Creating Foundations for Holistic Development in Early Education (PD) Tameka Walker & Ifetayo White **B-211**
- Time Management for ECE Directors (PA) Susan Kear **B-207**
- Appropriate Expectations & Responses to Behavior (CG) Anna Ghionis **B-201**
- Learning Opportunities for Young Children in Math Concepts (CU) Ella Mack **B-205**
- Building Strong Relationships with Young Children through Effective Communication (CG) Randy Mack **B-203**
- Bloodborne Pathogens: Safeguarding the EC Classroom (HS) Betty Ford **C-Youth Suite**
- Discipline vs. Punishment: "Know the Difference" (CG) Kimberly Kennedy **C-Social Hall**

1:30 – 2:30 PM

- It's Giving Ick! (PA) Heather Griffin **B-209**
- The Essence of the Doula's Presence: Creating Foundations for Holistic Development in Early Education (PD) Tameka Walker & Ifetayo White **B-211**
- You Can't Be My Friend! (CG) Susan Kear **B-207**
- Appropriate Expectations & Responses to Behavior (CG) Anna Ghionis **B-201**
- The Early Years: Supporting Milestones (GD) Ella Mack **B-205**
- Five Faces of Leadership in Early Childhood Education (PA) Randy Mack **B-203**
- Bloodborne Pathogens: Safeguarding the EC Classroom (HS) Betty Ford **C-Youth Suite**

2:40 – 3:40 PM

- KEYNOTE: "Unmasking the Potential in Our Unsung Heroes" (PD) Anita Lynn Singleton **C-Social Hall**



CHILDREN NEED THE FREEDOM TO APPRECIATE THE INFINITE RESOURCES OF THEIR HANDS, THEIR EYES, AND THEIR EARS -- THE RESOURCES OF FORMS, MATERIALS, SOUNDS, AND COLORS.

LORIS MALAGUZZI

KEYNOTE SPEAKERS - PAM BARKER & LYNN SINGLETON

● KEYNOTE: "WIDE-EYED FOR THE UNSUNG HEROES OF STORYTELLING" (CU) 1.0 HR - FRIDAY AM

● KEYNOTE: "UNsung HEROES: MOVIN', GROOVIN', AND MAKING MUSIC" (CU) 1.0 HR - FRIDAY PM

Pam Barker has worked with preschoolers for 30+ years. She had her own in-home preschool and also worked in church weekday. She has taught 2k, 3k and 4k, been a music teacher and chapel leader. She also directed a church preschool of 160 children and 50 staff for 12 years. Pam served on the church weekday committee of the SC Baptist Convention for 7 years. Pam loves sharing her experiences and ideas with teachers and leads conferences across the southeast. Encouraging preschool teachers, motivating them and giving new ideas to get them excited and make their job easier is one of her favorite things to do. She also loves storytelling, writing, music and making people laugh - all of which she incorporates in her conferences. When she isn't leading conferences, Pam loves spending time with her family and friends, gardening, travel and creating pieces for her craft business, Sticks and Stones and Words That Really Matter, LLC.



● KEYNOTE: "UNMASKING THE POTENTIAL OF OUR UNSUNG HEROES: THERE IS POWER IN NUMBERS" (PD) 1.0 HR - SATURDAY AM

● KEYNOTE: "UNMASKING THE POTENTIAL OF OUR UNSUNG HEROES" (PD) 1.0 HR - SATURDAY PM

Lynn Singleton is the current Board Chair of Beaufort County First Steps. She retired from the Beaufort County School District in June 2023 after 30 years of service. Her experience in education includes serving as a Principal, Teacher, and Coordinator of Parent Education. She has presented at several local and state educational conferences. She is the owner of Forward Learning Consulting, LLC, an educational consulting firm. She is married and lives with her husband on St. Helena Island.



SESSION DESCRIPTIONS

● **Appropriate Expectations & Responses to Behavior (CG) *Anna Ghionis***

In this training provided by Virtual Lab School, staff will learn about child development milestones and realistic expectations for children and youth. Staff will learn about appropriate guidance strategies that support nurturing relationships and a caring community.

● **Bloodborne Pathogens: Safeguarding the EC Classroom (HS) *Betty Ford***

Come learn strategies to safeguard your EC classroom against bloodborne pathogens to protect you and the children in your care.

● **Building Strong Relationships with Young Children through Effective Communication (CG) *Randy Mack***

Every interaction with a child is a form of communication. Educators who are responsive to children's thoughts and feelings help to support them to develop a strong sense of wellbeing. Trainees will receive best practices and strategies in interacting positively and meaningfully with young children to build relationships.

● **Circle Time=Party Time (CU) *Heather Griffin***

Circle time can be one of the most important interactions you have during the day. How do we make it empowering, impactful, and fun?

● **CPR & First Aid Training (HS) 3.0 hrs *Kerry Hardy***

NO DSS Credit. Pediatric CPR & First Aid Training includes adult, child and infant CPR as well as First Aid tailored for children. Kerry is here to make it a blast! With a fun and engaging approach, he'll keep you hooked and leave you with skills that you won't forget any time soon!

● **Discipline vs. Punishment: "Know the Difference" (CG) *Kimberly Kennedy***

This training is designed to provide childcare providers with effective positive discipline methods from toddlers to school-age children. Childcare providers often are challenged with various behaviors that require their intervention/interaction. Learn techniques to help distinguish between discipline and punishment that satisfies both children and parents.

● **The Early Years: Supporting Milestones (GD) *Ella Mack***

It is important for caregivers to understand typical child development and to know that timelines can vary for each child. Early experiences play a critical role in the child's development, and adverse experiences can derail them. Trainees will identify strategies to assist them in supporting milestones in young children.

SESSION DESCRIPTIONS

● **The Essence of the Doula's Presence: Creating Foundations for Holistic Development in Early Education (PD) *Tameka Walker & Ifetayo White***

The Essence of The Doula's Presence. Tap into the art of nurturing, giving guidance and practical strategies to infuse your teaching with the transformative power of the doula's presence, fostering holistic development and well-being in the early childhood learning environment.

● **Five Faces of Leadership in Early Childhood Education (PA) *Randy Mack***

Leadership in early childhood education can take many different forms. The trainer will identify five areas of leadership that are essential for administrators who lead early childhood programming to understand. These five areas include: pedagogical, administrative, advocacy, community, and conceptual leadership.

● **Growing Readers: Free Tools and Resources (PD) *Chantal Gunn***

Learn about the reading/literacy resources available for free at the Beaufort County Library. We will have examples of the different types of physical books available along with an overview of our digital platform Hoopla. We will demonstrate how to access other technology-based literacy resources such as Tumble books, ABC Mouse, tutor.com and look at state-wide resources that are available.

● **Improving Our Engagement with Families (PD) *Bailey Smith***

Do you get irritated or anxious when having to deal with parents? In this session we will examine some of the perspectives of parents and of our role in order that we might have more positive experiences with parents. Participants will leave with a renewed perspective of the role we play in the lives of children and a few tips and techniques to have a more positive engagement with parents/caregivers.

● **It's Giving Ick! (PA) *Heather Griffin***

Teaching is hard, harder than many people think, man life is just hard. How do we pull ourselves up and get motivated to be the best at our jobs as leaders & teachers?

● **Learning Opportunities for Young Children in Math Concepts (CU)**

Ella Mack

Young learners need to be introduced to math concepts in developmentally appropriate ways. They need daily opportunities to play with numbers and other mathematical concepts. Trainees will be given fun and developmentally appropriate ways to introduce children to the world of math.

SESSION DESCRIPTIONS

● **Mandated Reporter Training (PD) *Ashleigh Newman***

Mandated Reporting is for professionals required by law to report child abuse and neglect. Through a power point presentation and handouts, participants learn about the different types of abuse and the most common signs. Participants will also learn how to handle a child's disclosure, including how to react, who to contact, and applicable laws.

● **Meal Safety (NU) *Teneshia Slempa & Heather Reyes***

This session is designed to equip participants with essential knowledge and practices to ensure child safety during mealtimes. With a focus on proactive measures, participants will learn three key meal safety practices crucial for minimizing risks and creating a secure dining environment for children. From choking hazards to food allergies, this session addresses common concerns and offers practical solutions to safeguard children during meals. Whether you're a parent, caregiver, or educator, join us to enhance your understanding and skills in promoting mealtime safety for children.

● **Raising Relationships: An Infant & Early Childhood Mental Health Perspective on Preschool Expulsion (CG) *Michelle Hammack & Queen-Ella Pringle***

There is a crisis in SC, and it's not being talked about. Early childhood educators are faced with big behaviors and big decisions everyday which impact the long-term wellbeing of young children. As we lean into this difficult topic, we will share what is going on across the state and equip educators with tools to help them navigate the multitude of challenges they face.

● **Time Management for ECE Directors (PA) *Susan Kear***

Administrators wear many hats. This session will help you to use your time well. Come to learn new ways to improve your skills.

● **Unmasking the Potential in Our Unsung Heroes (PD) *Lynn Singleton***

The role of a teacher goes beyond teaching academic skills. Teachers impart many important skills. Too often these victories go unnoticed. This session will reveal the powerful influence of teachers and caregivers.

● **"Unmasking the Potential of Our Unsung Heroes: There is Power in Numbers" (PD) *Lynn Singleton***

It is never too early to start teaching number concepts. This workshop will focus on ways to build children's developing math skills and ways to incorporate math into everyday life activities and events.

SESSION DESCRIPTIONS

● **Unsung Heroes: Movin', Groovin' and Making Music (CU) Pam Barker**

Music can change your mood, help you memorize, grow your self-esteem, help express feelings, and get you moving. Music helps with cognitive, sensory, and motor skills. Music is the universal language and music is FUN. Learn new songs and dances, musical games, and activities, ways to use instruments and ideas for incorporating music in ALL areas of teaching.

● **Wide-Eyed for the Unsung Heroes of Storytelling (CU) Pam Barker**

Storytelling is the art of bringing a story to life through the inflection in one's voice, rhythm, facial expression, and movements. Your stories can stir children's emotions and imaginations, develop sensitivity to others, improve listening skills, and provide new experiences. Learn ways to get children's attention and keep them engaged.

● **You Can't Be My Friend! (CG) Susan Kear**

Relational Aggression takes several forms and can be disruptive in the classroom. By exploring causes, providers can use strategies to avoid this in the classroom.



HOW IMPORTANT IT IS FOR US TO RECOGNIZE AND CELEBRATE OUR HEROES AND SHE-ROES!

MAYA ANGELOU

PRESENTER ACKNOWLEDGEMENTS

A SPECIAL THANK YOU TO OUR EXPERT PRESENTERS!

Pam Barker, Conference Leader/Trainer

Betty Ford, Trainer, American Red Cross

Anna Ghionis, Training & Curriculum Specialist, Laurel Bay & Parris Island School Age Care Programs

Heather Griffin, Teacher/Education Coordinator, The Island School

Chantal Gunn, Library Branch Manager, Lobeco Library

Michelle Hammack, IECMH Program Specialist, SC Infant Mental Health Association (SCIMHA)

Kerry Hardy, Instructor, First Response Safety Training

Susan Kear, Professional Development Director, Palmetto Shared Services Alliance

Kimberly Kennedy, Retired Early Childhood Specialist

Ella Mack, Educator & Early Childhood Trainer

Randy Mack, Lead Teacher/Adult Education, Fairfield School District

Ashleigh Newman, Prevention Services Coordinator, Child Abuse Prevention Association (CAPA)

Queen-Ella Pringle, SC Infant Mental Health Association (SCIMHA)

Heather Reyes, South Carolina Childcare Resource & Referral

Lynn Singleton, Beaufort County First Steps Board Chair & Educational Consultant

Teneshia Slempta, South Carolina Childcare Resource & Referral

Bailey Smith, Counselor, Bay of Hope Counseling Services

Tameka Walker, Birth and Postpartum Doula, Energy Evolution Holistic Health and Wellness

Ifetayo White, Birth and Postpartum Doula, Choices Birthing and Wellness

SPECIAL ACKNOWLEDGEMENTS

A SPECIAL THANK YOU FOR YOUR GENEROSITY & SUPPORT!

Supporting Agencies

Beaufort County Library
Child Abuse Prevention Association (CAPA)
Forward Learning Consulting, LLC
Palmetto Shared Services Alliance
South Carolina Childcare Resource & Referral

Staff/Volunteers

Lucette Brown, Beaufort County First Steps
Solimar Abbott, Beaufort County First Steps/PAOSs
Karla Lozada, Beaufort County First Steps/PASOs
Pamela Rose, Jasper County First Steps
Victoria Powell, Hampton County First Steps
Kimberly Kennedy, Retired Early Childhood Specialist
Tricia Gordon, Barnwell County First Steps

Set-up and Maintenance

Webster P. Pinckney, Jr.
Luis Rivera

Special Thanks and Acknowledgement

Baptist Church of Beaufort Staff and
Volunteers
Assisting with set-up, parking, and use of space

Hotel Accommodations

Holiday Inn

Food Accommodations

Taste Restaurant

TEAM LOWCOUNTRY COMMITTEE

A SPECIAL THANK YOU FOR PLANNING, HOSTING, & EXECUTING!

Betty Washington, Executive Director, Beaufort County First Steps

Duchett Polite-Hylton, Executive Director, Jasper County First Steps

Dwana Doctor, Executive Director, Hampton County First Steps

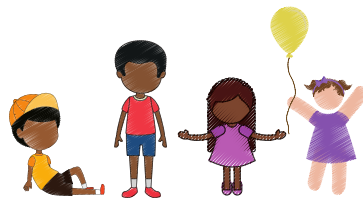
Erin Mathews, Program Specialist, Beaufort County First Steps

Julia Burnes, Early Child Director, Beaufort Jasper EOC Head Start

Kelly Zytynski, Children's Director, Baptist Church of Beaufort

Patricia Hall, Executive Director, Allendale County First Steps

Tricia Gordon, Executive Director, Barnwell County First Steps



EDUCATION BEGINS THE MOMENT WE SEE CHILDREN AS INNATELY WISE AND
CAPABLE BEINGS. ONLY THEN CAN WE PLAY ALONG IN THEIR WORLD.

VINCE GOWMON

COUNTY PARTNERSHIPS

**A SPECIAL THANK YOU FOR YOUR GENEROSITY
AND SUPPORT OF THIS YEAR'S CONFERENCE!**

Allendale County First Steps

649 Railroad Avenue E
Allendale, SC 29810
(803) 702-9010
a1steps@yahoo.com



Barnwell County First Steps

110 Franklin St.
Barnwell, SC
(803) 450-1493
info@barnwellfirststeps.org



Beaufort County First Steps

703 Bladen St.
Beaufort, SC 29902
(843) 379-7837
beaufortfirststeps.com



Hampton County First Steps

301 First Street East
Hampton, SC 29924
(803) 943-7127
hamptonfirststeps.org
hampton1steps@gmail.com



Jasper County First Steps

P.O. Box 776
456 Grays HWY, Suite 211
Ridgeland, SC 29936
(843) 726-5100
jaspercountyfirststeps.org



OUR SPONSORS

**A SPECIAL THANK YOU FOR YOUR GENEROSITY
AND SUPPORT OF THIS YEAR'S CONFERENCE!**



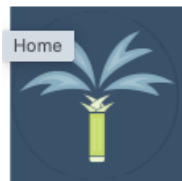
BAPTIST CHURCH OF BEAUFORT

601 Charles St.
Beaufort, SC 29901
MAILING: PO Box 879
BCOB.ORG



LAKESHORE LEARNING

62695 E. Dominguez St.
Carson, CA 90895
www.lakeshorelearning.com



**Palmetto Shared
Services Alliance**

PALMETTO SHARED SERVICES ALLIANCE

700 N Pleasantburg Dr
Greenville, SC 29607
www.palmettosharedservices.com

NOTES



THE GOAL OF EARLY CHILDHOOD EDUCATION SHOULD BE TO
ACTIVATE THE CHILD'S OWN NATURAL DESIRE TO LEARN.

MARIA MONTESSORI

2024

TEAM LOWCOUNTRY EARLY CHILDHOOD CONFERENCE

Certificate

OF ATTENDANCE



PROUDLY PRESENTED TO



For Attending:

2024 Teachers, Educators, Advocates, and Mentors
Lowcountry Early Childhood Conference

“Unmasking the potential of our unsung heroes”

April 5 - 6, 2024



AWARDED BY TEAM LOWCOUNTRY PLANNING COMMITTEE

NOTES



PLAY IS FUNDAMENTALLY IMPORTANT FOR LEARNING 21ST CENTURY SKILLS, SUCH AS PROBLEM SOLVING, COLLABORATION, AND CREATIVITY.

AMERICAN ACADEMY OF PEDIATRICS

NOTES



A CHILD MUST KNOW THAT HE IS A MIRACLE, THAT SINCE THE BEGINNING OF THE WORLD THERE HASN'T BEEN, AND UNTIL THE END OF THE WORLD THERE WILL NOT BE, ANOTHER CHILD LIKE HIM.

PABLO CASALS

SURVEY



Use your phone's camera to point to the QR code above. Then tap the link that appears and complete the survey.

Thank You!